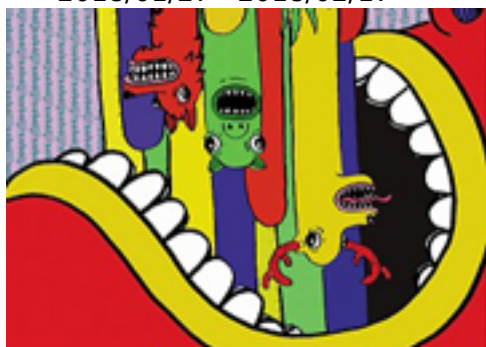


METU Graphic Passage & FOOD CHAIN - exhibition

2018/01/27 - 2018/02/17



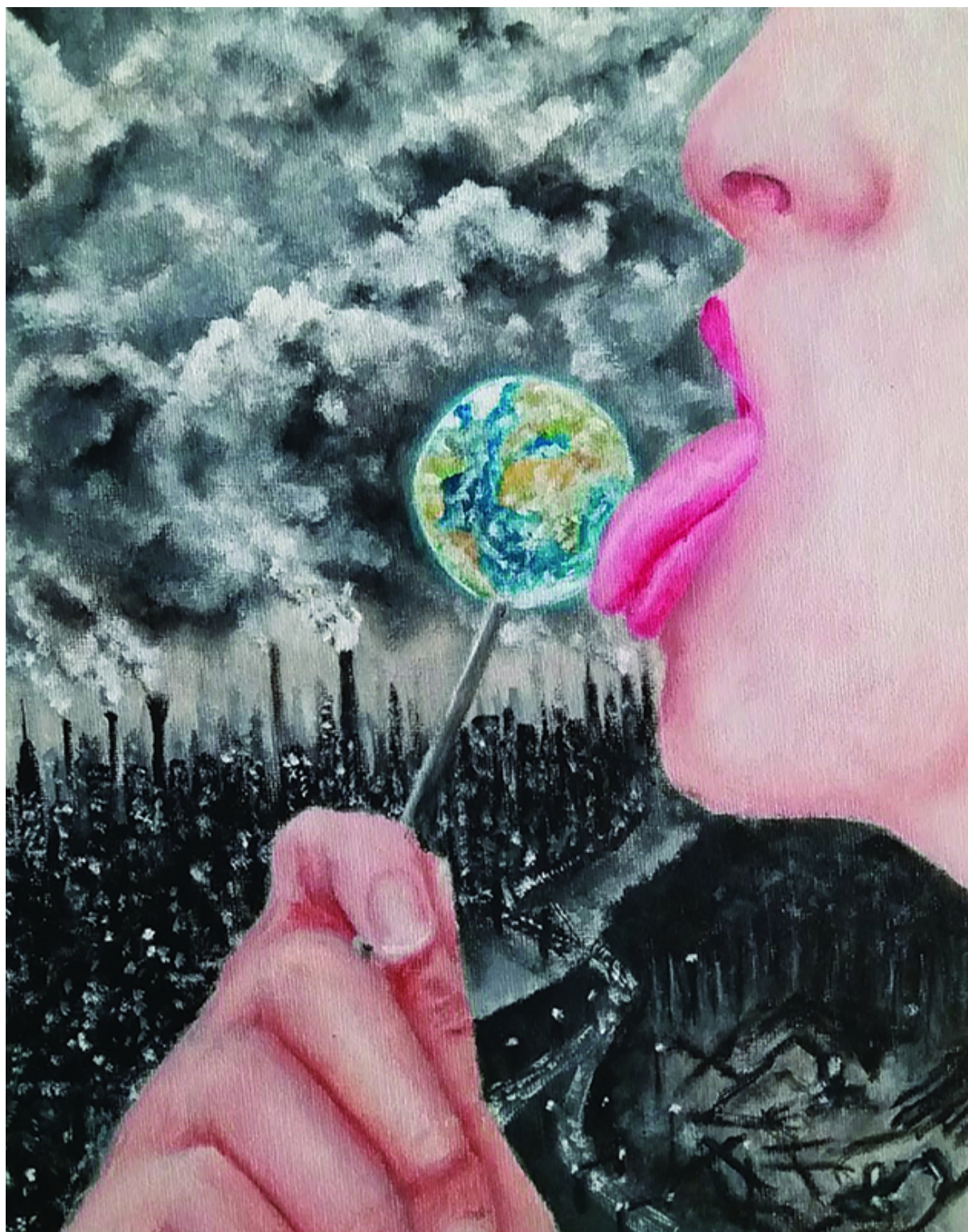
As of January 27, 2018, NSZL will host a double exhibition set up by the Institute of Visual Communication of Budapest Metropolitan University (METU). The exhibition presents creative works made by secondary grammar school students, sent in for the Food Chain competition, and works created by the most outstanding students of graphic training.



[1]

As of January 27, 2018, NSZL will host a double exhibition set up by the [Institute of Visual Communication](#) [2] of Budapest Metropolitan University (METU). The exhibition presents creative works made by secondary grammar school students, sent in for the [Food Chain competition](#) [3], and works created by the most outstanding students of graphic training.

FOOD CHAIN



[4]

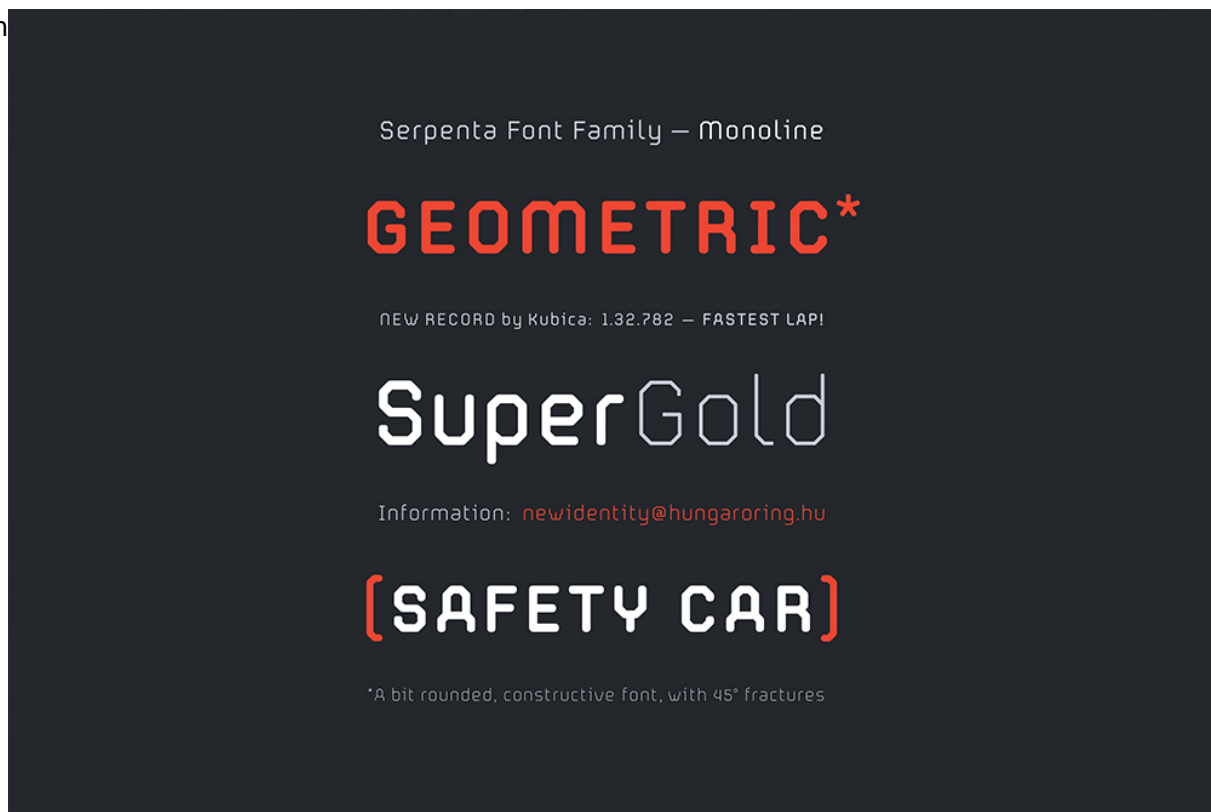


The key word (food chain) of the competition is meant to draw attention to current problems of our age – i.e. the main cause of the change in ecological balance is the consequence of the activity of man on top of the food chain.

Contestants could send in their works in two genre categories (poster and illustration). The number of uploaded competing titles totaled 135. Based on multiple voting by the jury, a total of 36 works by 30 artists are on display.

METU Graphic Passage

In the frame



[6]ework of METU Graphic Passage, general public will have the opportunity to see a selection of the works of BA and MA students majoring in Design Graphics, and those of MA students majoring in Imaging (form erly: Image Representation). The exhibited works cover various graphic areas, including image design, packaging design, font, book, and toy design. A whole lot of mid-term assignments and diploma works are also on display.

Source: [Budapest Metropolitan University](#) [7]

Venue: Ars Librorum, Corvina Halls, Floor 6

Open from January 27 and February 17, 2018, between 10 a.m. and 6 p.m.

Admission is free.



[8]

2018/01/28 - 15:59

Source URL: <http://193.6.201.226/en/exhibitions/metu-graphic-passage-food-chain-exhibition>

Links:

- [1] <http://193.6.201.226/sites/default/files/sasdi-laura-tengernyi-tudas.jpg>
- [2] <https://www.metropolitan.hu/vizualis-kommunikacio-intezet>
- [3] <http://taplaleklanc.metropolitan.hu/>
- [4] <http://193.6.201.226/sites/default/files/nadasi-karolina-ezt-elnyaltuk.jpg>
- [5] <http://193.6.201.226/sites/default/files/wirth-georgina-Neuroborosz.jpg>
- [6] <http://193.6.201.226/sites/default/files/METU-szakos-daniel-serpenta.jpg>
- [7] <http://metubudapest.hu/>
- [8] <https://youtu.be/rYoLYzwFShg>
- [9] <http://193.6.201.226/en/category/foszotar-es-pozicionalo/hirek>